

No. PDMA (SINDH)/(SITREP)/2022/1533

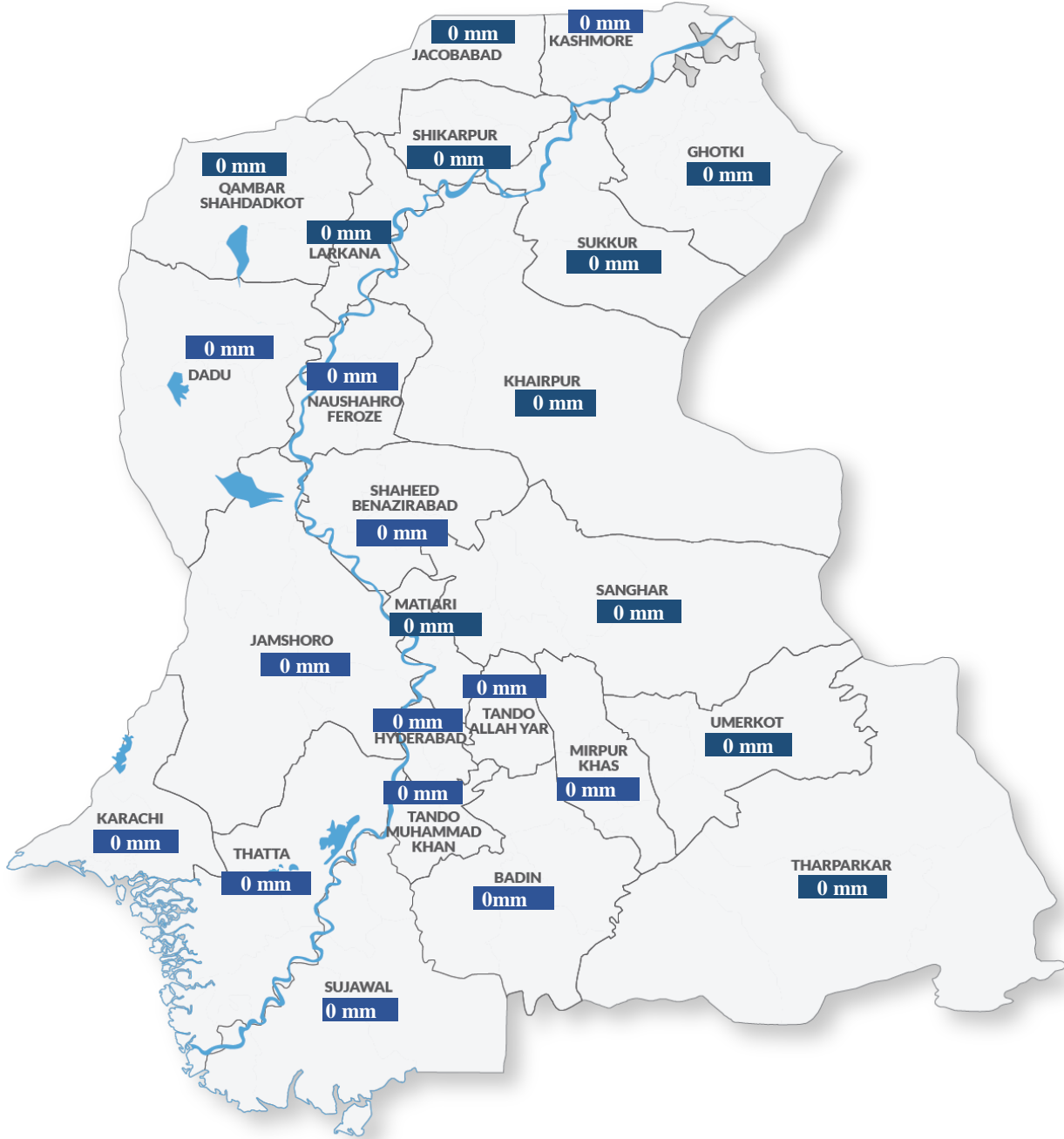
October 25, 2022

Period Covered: 22:00 hrs. 20-06-2022 to 24-10-2022 22:00 hrs.

DAILY SITUATION REPORT

Weather Situation Overview

Rainfall in Average (last 24 hrs.)



Source: CM Portal

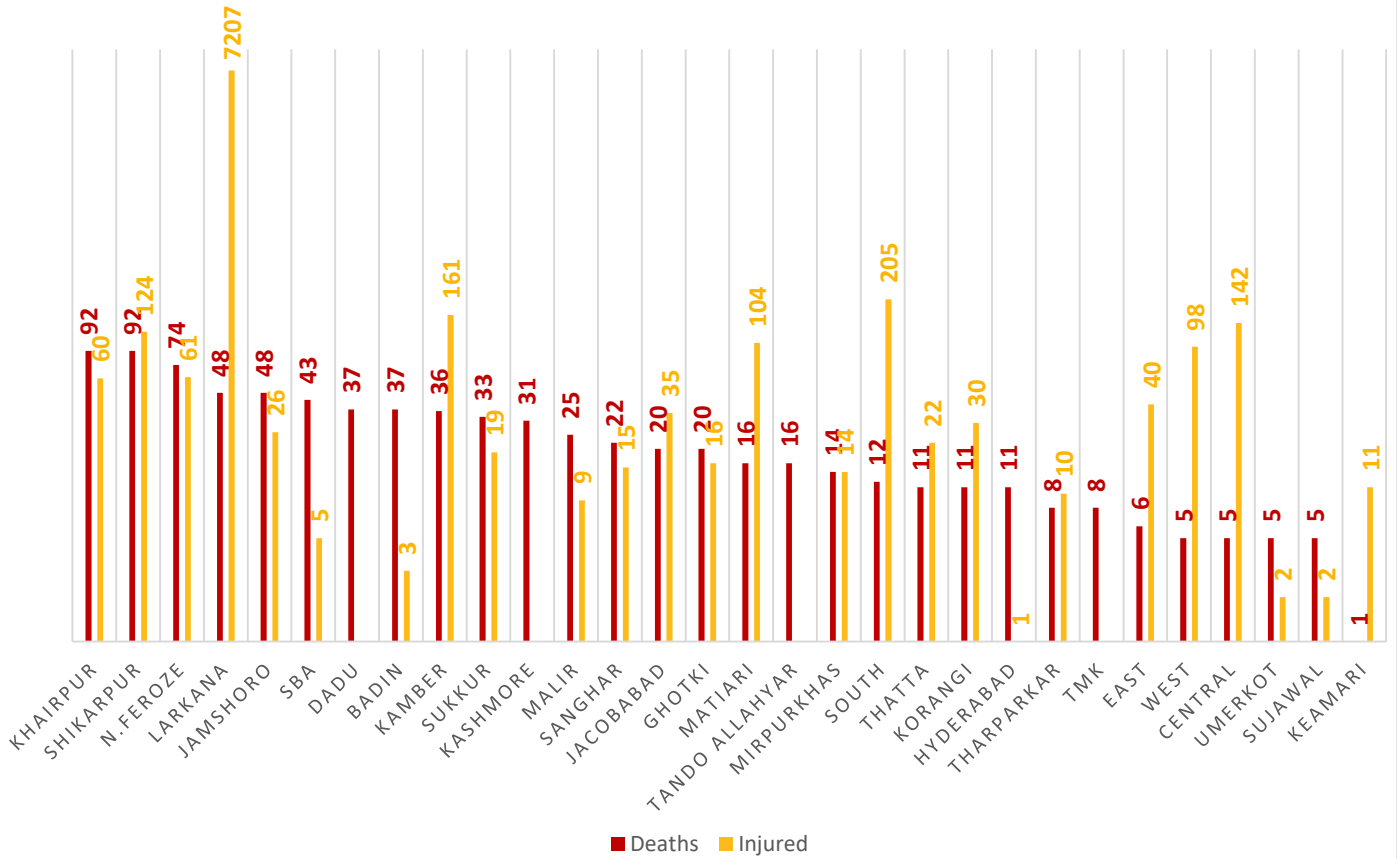
Weather Forecast

- Nothing to Report (NTR)



Summary of Losses

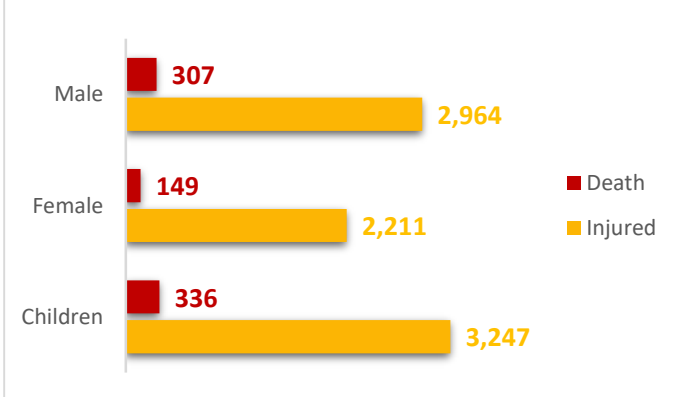
DISTRICT-WISE DEATHS & INJURED



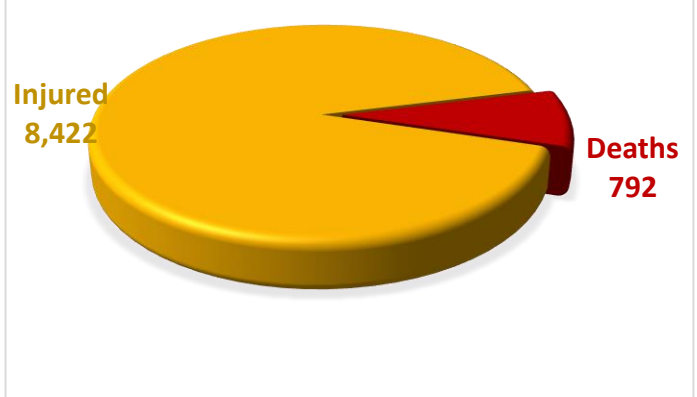
Death Data Source: Concerned Deputy Commissioners.

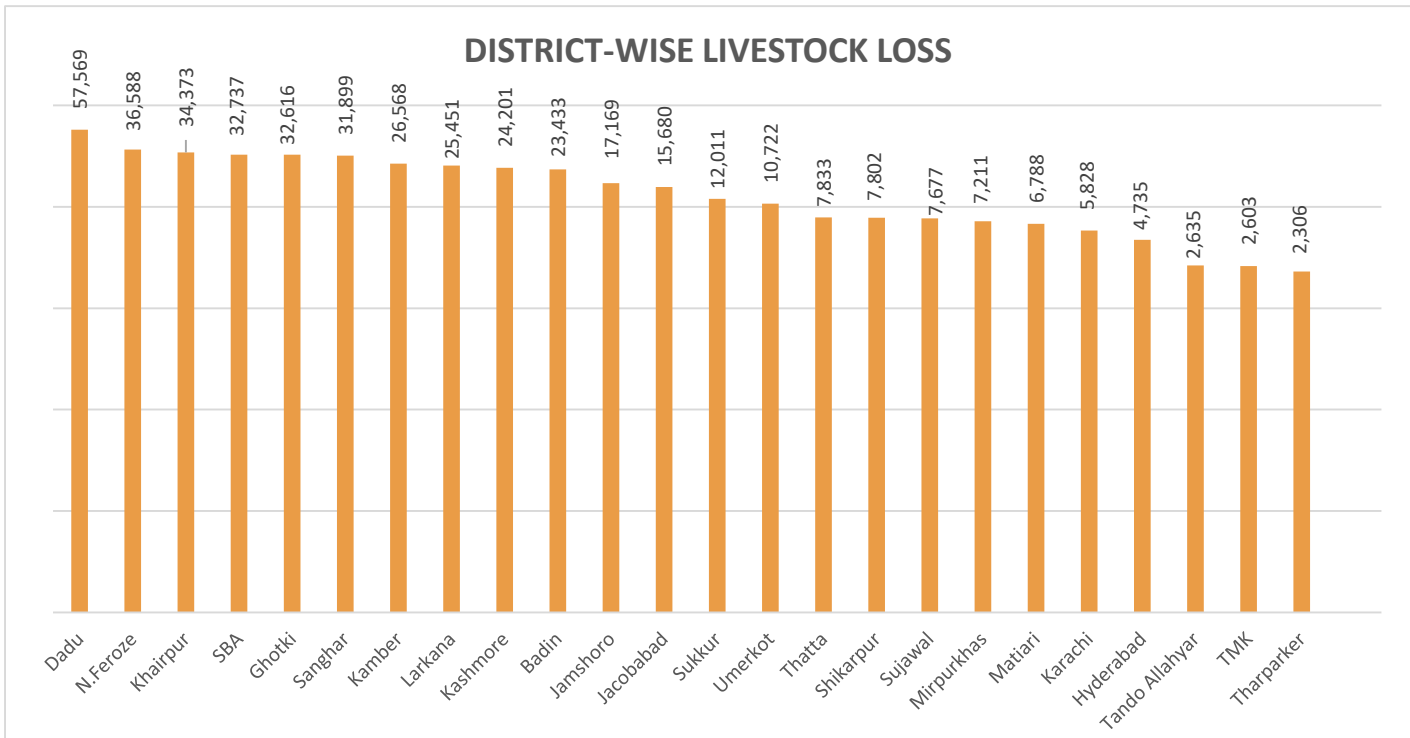
Injury Data Source: Directorate General Health Services, Hyderabad.

GENDER-WISE DISTRIBUTION



SUMMARY

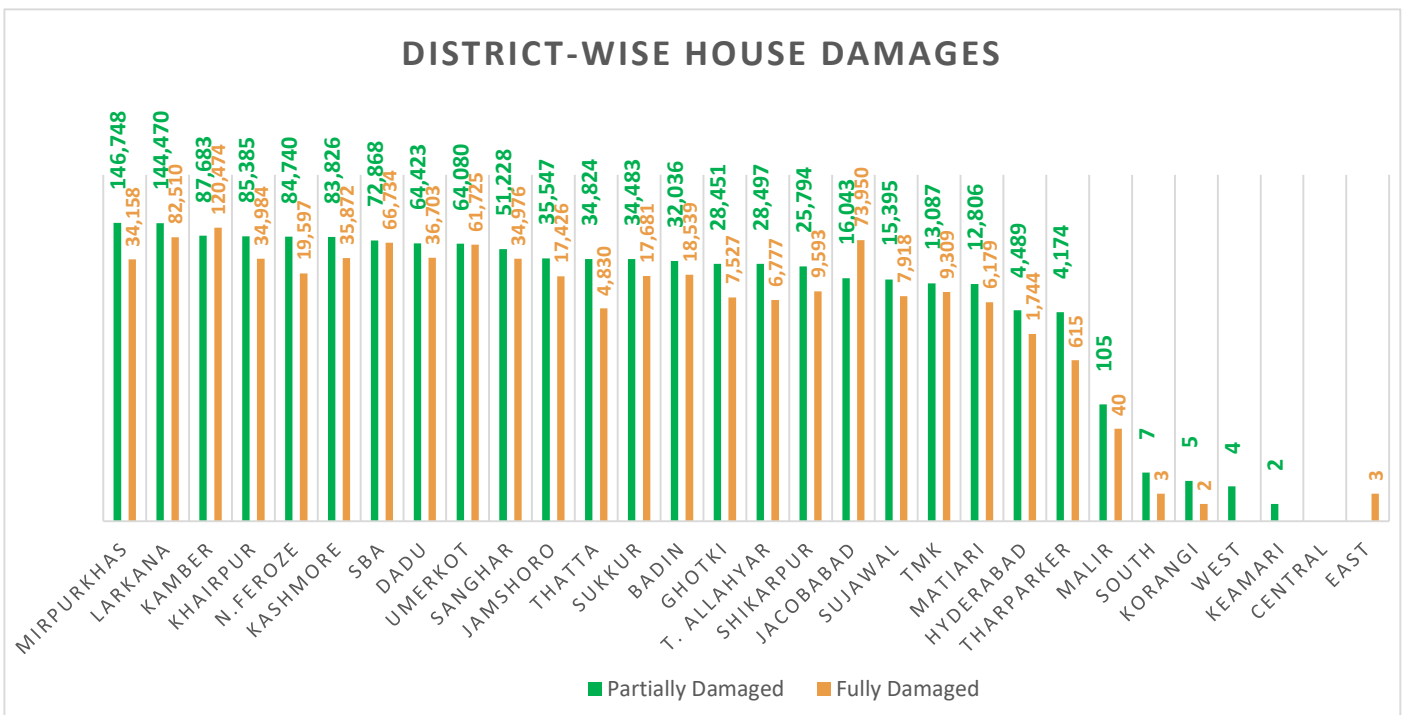




Total Livestock Perished: 436,435

Livestock Data Source: DG Livestock Sindh.

Summary of Infrastructure & Private Property Damage

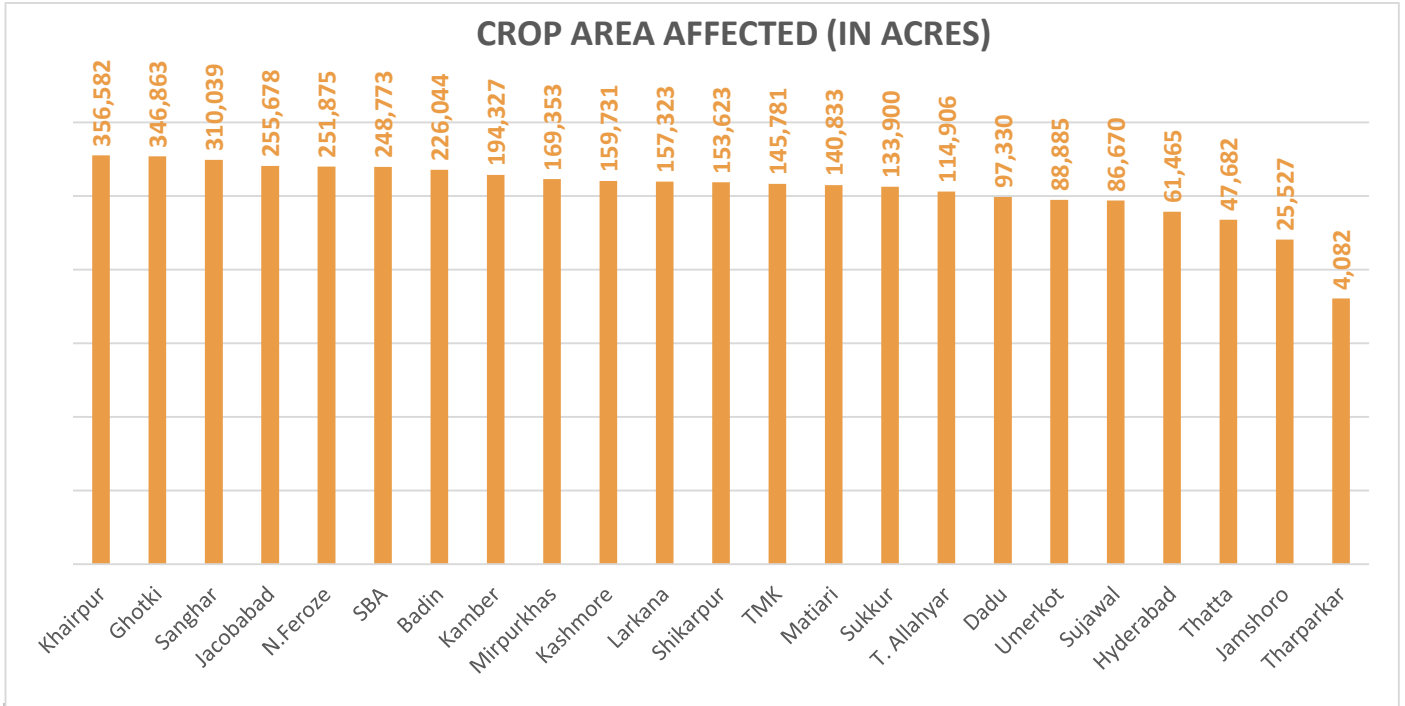


Partially Damaged – 1,171,200

Fully Damaged – 709,869

Grand Total – 1,881,069

Source: Concerned Deputy Commissioners.



Total Crop Area Damaged: 3,777,272

Source: Relief Department Sindh

Division	District	No. of UC's Affected	No. of Roads	Road (km)	Bridge	Culverts	Causeways (Rft)	Shop	Hotel	Masjid
Karachi	East	-	1	8	2	-	750	-	-	-
	West	-						-	-	
	South	18						1	-	
	Central	-						3	-	
	Malir	14						7	-	
	Korangi	2						-	-	
	Keamari	32						-	-	
Sub Total		66	1	8	2	-	750	11	-	-
Hyderabad	Hyderabad	160	13	76	2	-	-	-	-	-
	Jamshoro	30	42	516	15	9	1,375	-	-	-
	Dadu	66	65	569	6	99	-	-	-	-
	Matiari	30	7	83	-	-	-	-	-	-
	Tando Allahyar	28	37	344	6	92	-	-	-	-
	TMK	28	7	118	0	6	-	-	-	-

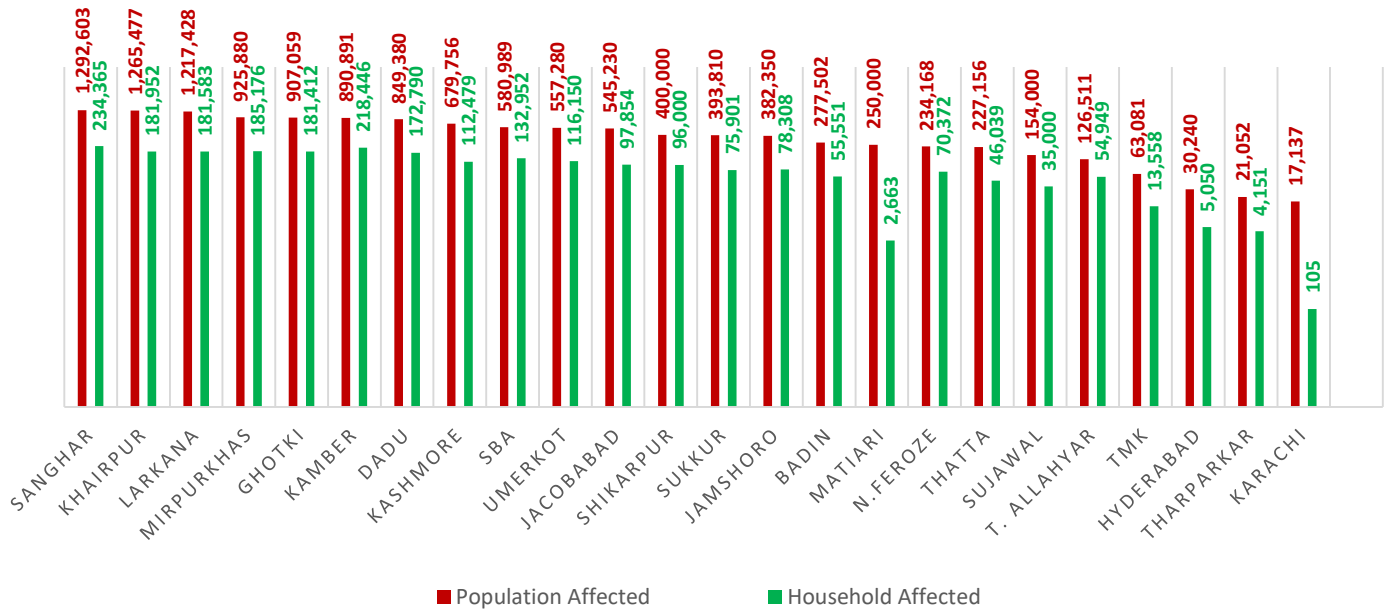
Division	District	No. of UC's Affected	No. of Roads	Road (km)	Bridge	Culverts	Causeways (Rft)	Shop	Hotel	Masjid
	Thatta	40	39	291	23	233	-	-	-	-
	Sujawal	37	30	426	57	272	-	-	-	-
	Badin	68	53	799	13	82	0	5	2	3
Sub Total		487	293	3,221	122	793	1,375	5	2	3
Sukkur	Sukkur	67	20	181	1	25	-	11	-	-
	Khairpur	88	110	622	2	83	-	13	-	3
	Ghotki	66	24	252	-	-	-	-	-	-
Sub Total		221	154	1,055	3	108	-	24	-	3
SBA	SBA	60	58	942	15	45	-	-	-	-
	N.Feroze	68	60	727	2	124	-	-	-	-
	Sanghar	73	52	296	10	119	-	-	-	-
Sub Total		201	170	1,965	27	288	-	-	-	-
Larkana	Larkana	68	24	192	1	54	-	-	-	-
	Kamber-Shahdadkot	52	51	173	3	158	-	-	-	-
	Shikarpur	55	23	258	-	38	-	-	-	-
	Jacobabad	44	66	166	-	65	-	-	-	-
	Kashmore	41	24	289	1	14	-	-	-	-
Sub Total		260	188	1,078	5	329	-	-	-	-
Mirpurkhas	Mirpurkhas	50	15	207	6	82	-	-	-	-
	Umerkot	42	21	332	-	69	-	-	-	-
	Tharparker	3	18	597	-	80	-	-	-	-
Sub Total		95	54	1,136	6	231	-	-	-	-
Grand Total		1,330	860	8,463	165	1,749	2,125	40	2	6

Source of UCs Affected: Relief Department Sindh

Source of Infrastructure Damage: Works & Services Department Sindh

Note: - Works & Services Department has reported that 2,548 Government buildings have been damaged.

POPULATION AFFECTED

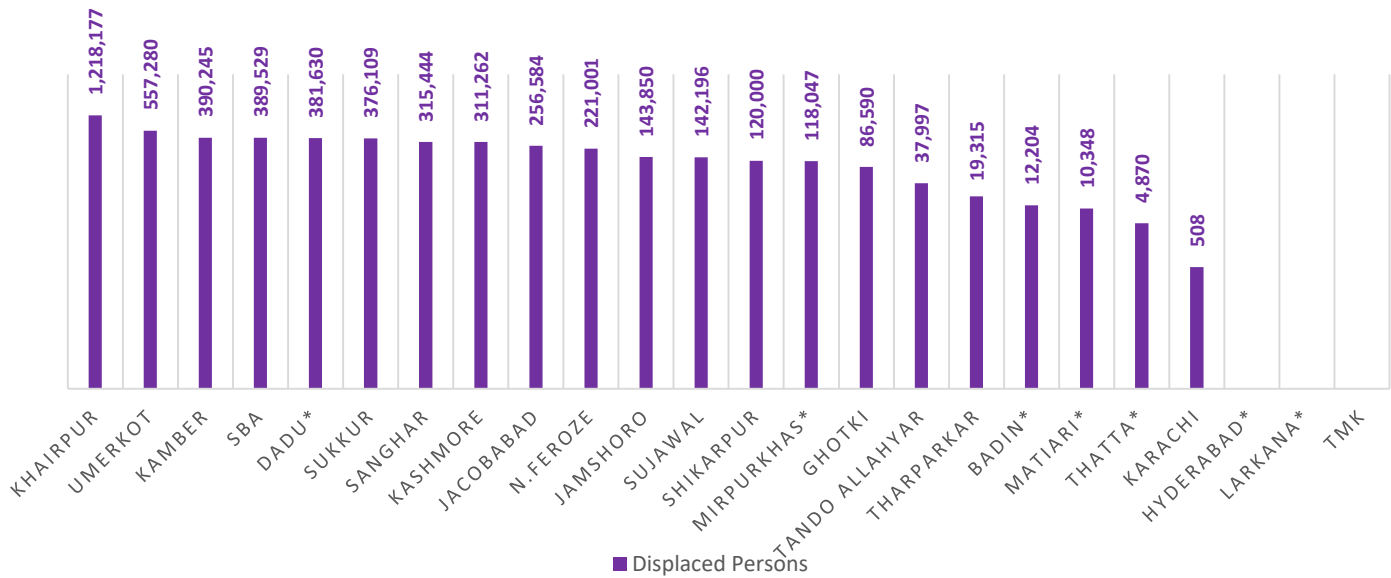


Total Population Affected: 12,288,980

Total Households Affected: 2,352,806

Source: Concerned Deputy Commissioners.

POPULATION DISPLACED



Total Number of Person Displaced: 5,113,186

Source: Concerned Deputy Commissioners.

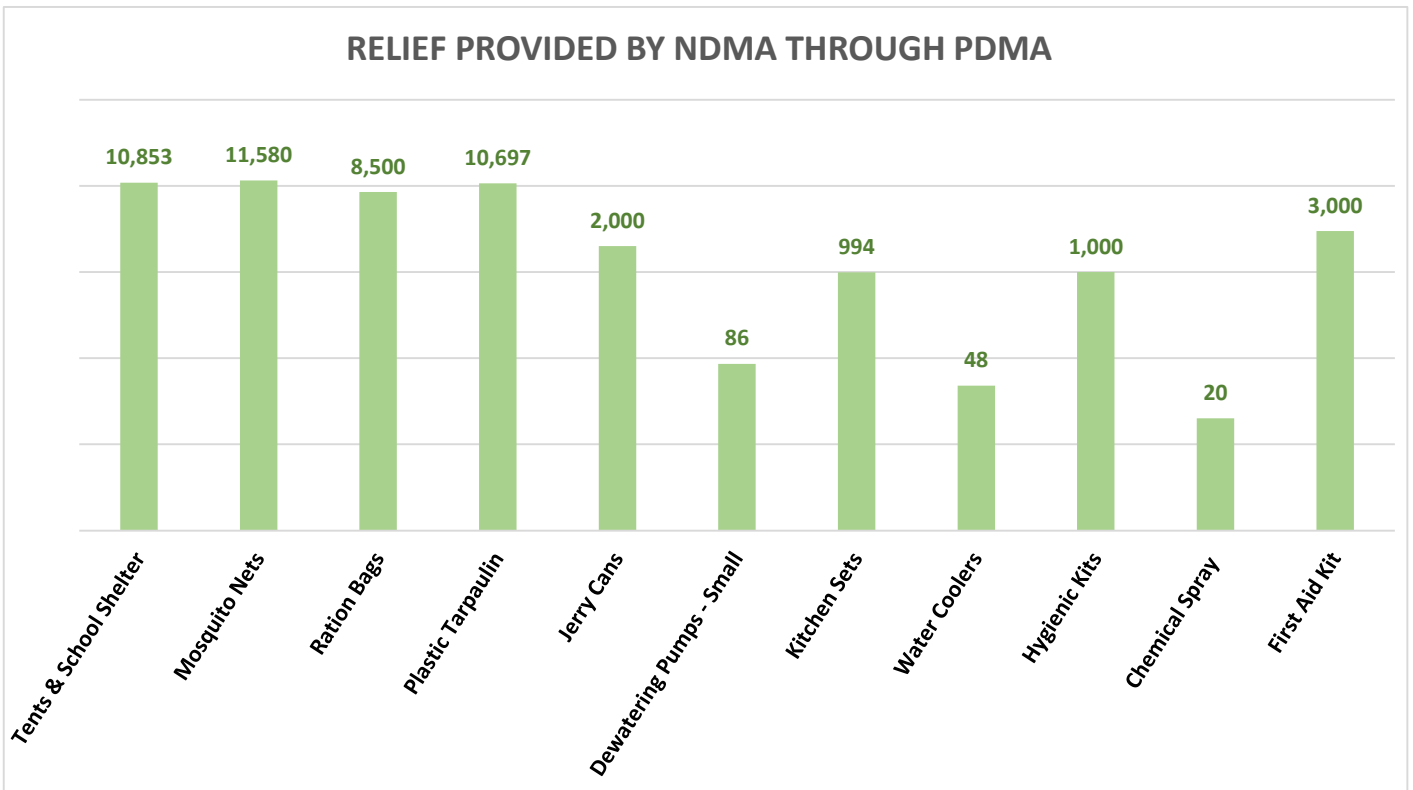
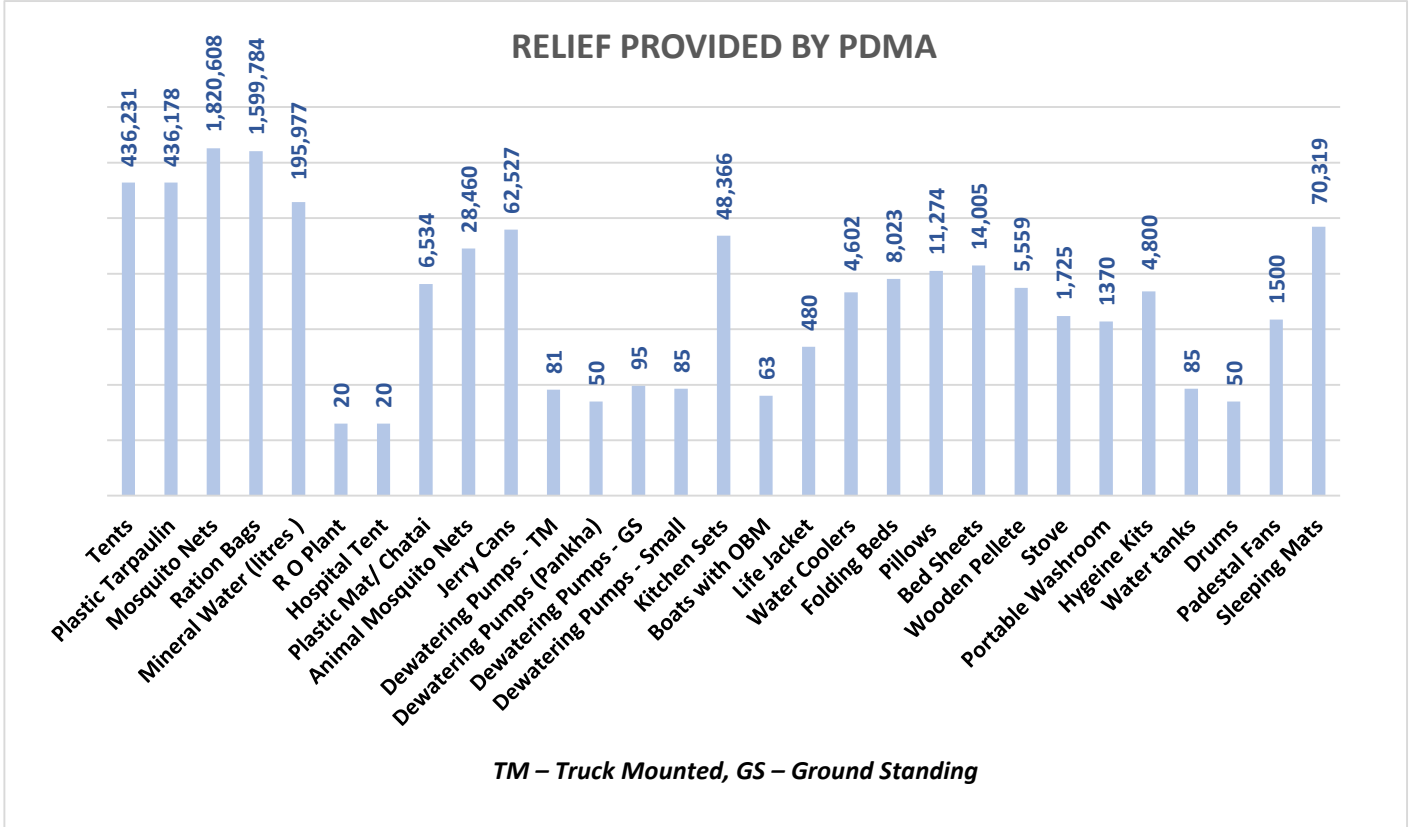
Note: Deputy Commissioner Dadu, Matiari, Thatta, Badin, Larkana and Mirpurkhas has reported that the No. of Displaced Population has been decreased.

Relief Camps Established by DDMAs / Deputy Commissioners

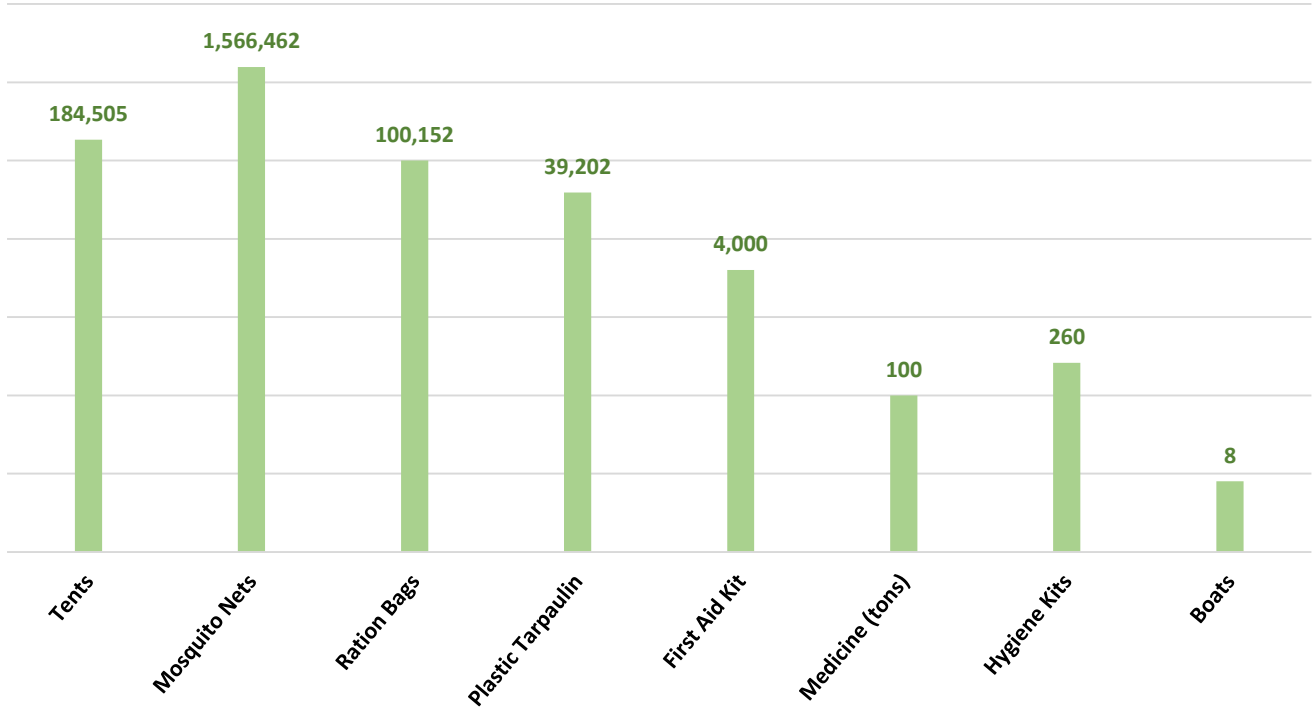
Division	District	Relief Camps Established	Persons in Relief Camps (Last 24hrs)			
			M	F	C	T
Karachi	East	15	-	-	-	6,341
	West	7	-	-	-	3,705
	Korangi	2	-	-	-	505
	Malir	8	-	-	-	4,794
	Central	2	-	-	-	-
	Keamari*	-	-	-	-	-
Sub Total		34	-	-	-	15,345
Hyderabad	Hyderabad*	29	-	-	-	-
	Jamshoro*	3	206	248	372	826
	Dadu*	57	3,260	3,875	6,002	13,137
	Matiari*	2	-	-	-	640
	Tando Allahyar	-	-	-	-	-
	Tando M. Khan*	16	1,040	1,000	960	3,000
	Thatta*	-	-	-	-	-
	Sujawal*	14	-	-	-	-
Badin	-	-	-	-	-	
Sub Total		121	4,506	5,123	7,334	17,603
Sukkur	Sukkur	9	224	295	554	1,073
	Khairpur*	-	-	-	-	-
	Ghotki	-	-	-	-	-
Sub Total		9	224	295	554	1,073
SBA	SBA	-	-	-	-	-
	N.Feroze*	122	4,951	4,646	7,110	16,707
	Sanghar*	151	-	-	-	-
Sub Total		273	4,951	4,646	7,110	16,707
Larkana	Larkana*	-	-	-	-	-
	Kamber-Shahdadkot*	140	-	-	-	15,093
	Shikarpur*	-	-	-	-	-
	Jacobabad*	-	-	-	-	-
	Kashmore*	27	-	-	-	-
Sub Total		167	-	-	-	15,093
Mirpurkhas	Mirpurkhas*	35	-	-	-	-
	Umerkot*	3	503	810	1,577	2,890
Sub Total		38	503	810	1,577	2,890
Grand Total		642	10,184	10,874	16,575	68,711

Source: Concerned Deputy Commissioners of Sindh.

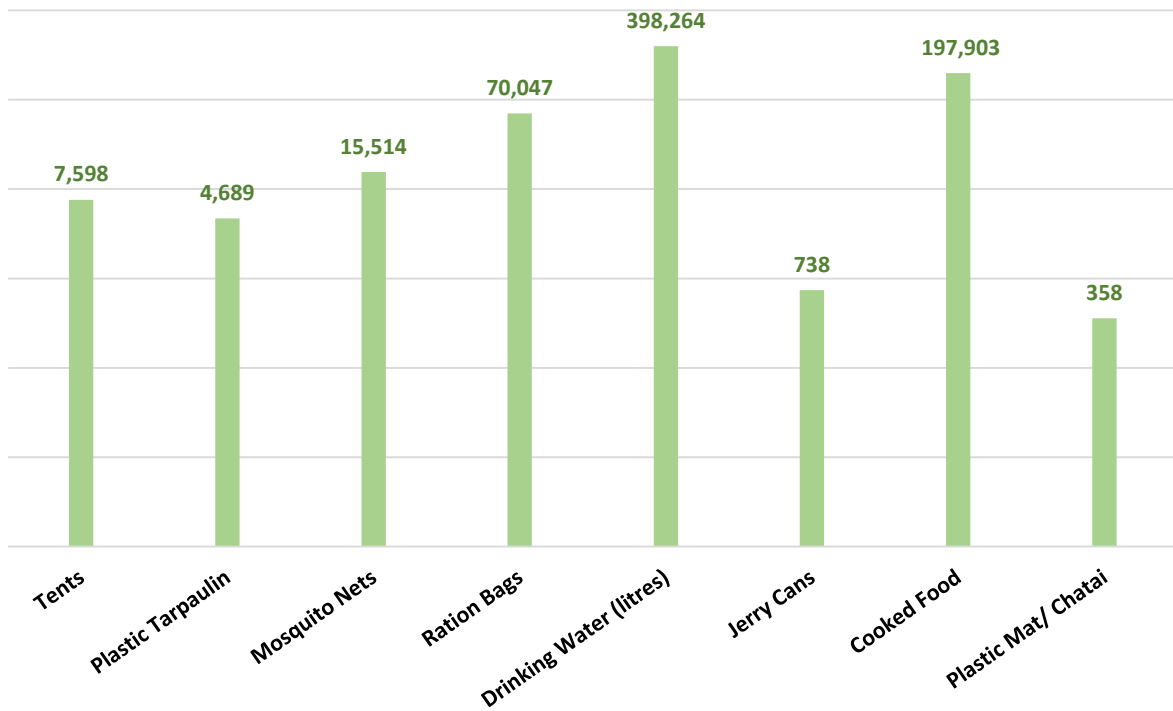
Note: Deputy Commissioner Keamari, Jamshoro, Dadu, Thatta, Khairpur, N.Feroze, Jacobabad, Larkana, Shikarpur and Umerkot has reported that the number of Relief Camps Established has been decreased.



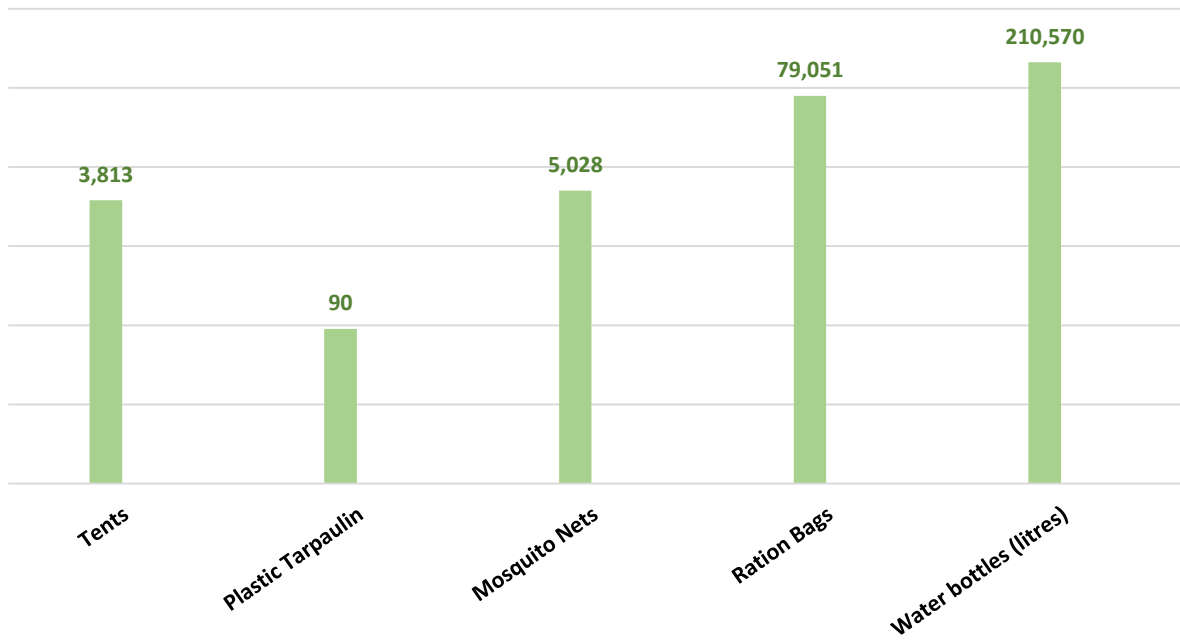
RELIEF PROVIDED BY NDMA THROUGH ARMY



RELIEF PROVIDED BY PAK NAVY



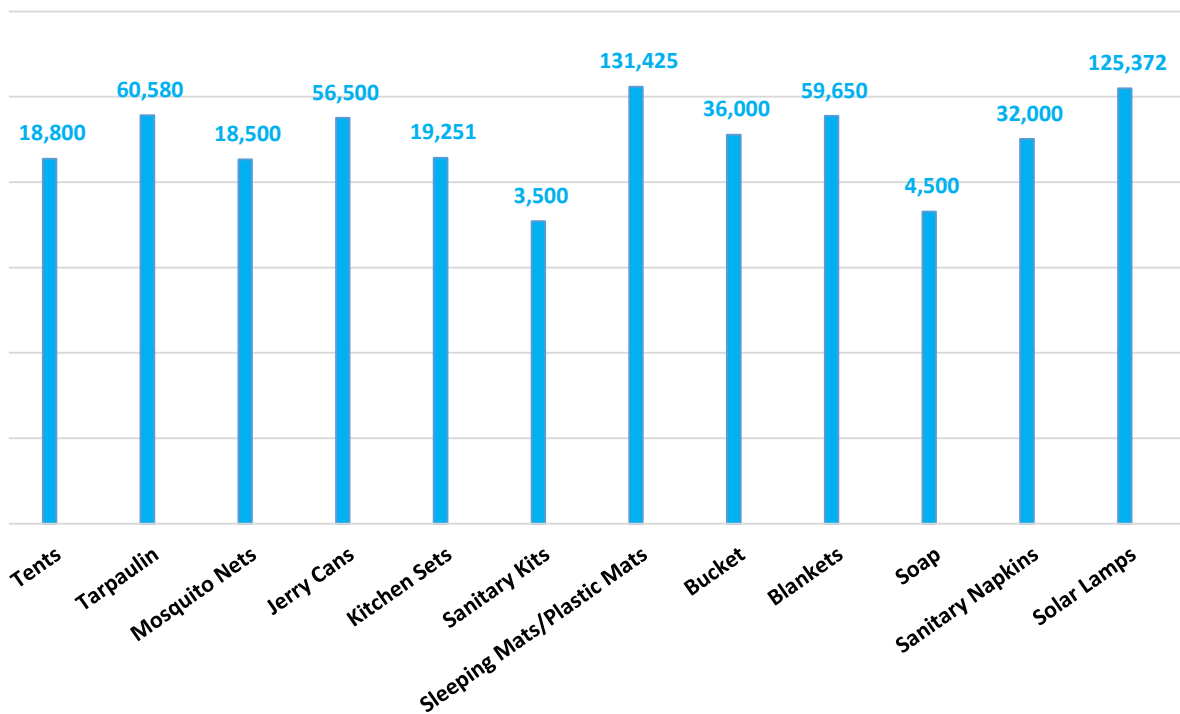
RELIEF PROVIDED BY PAK AIRFORCE



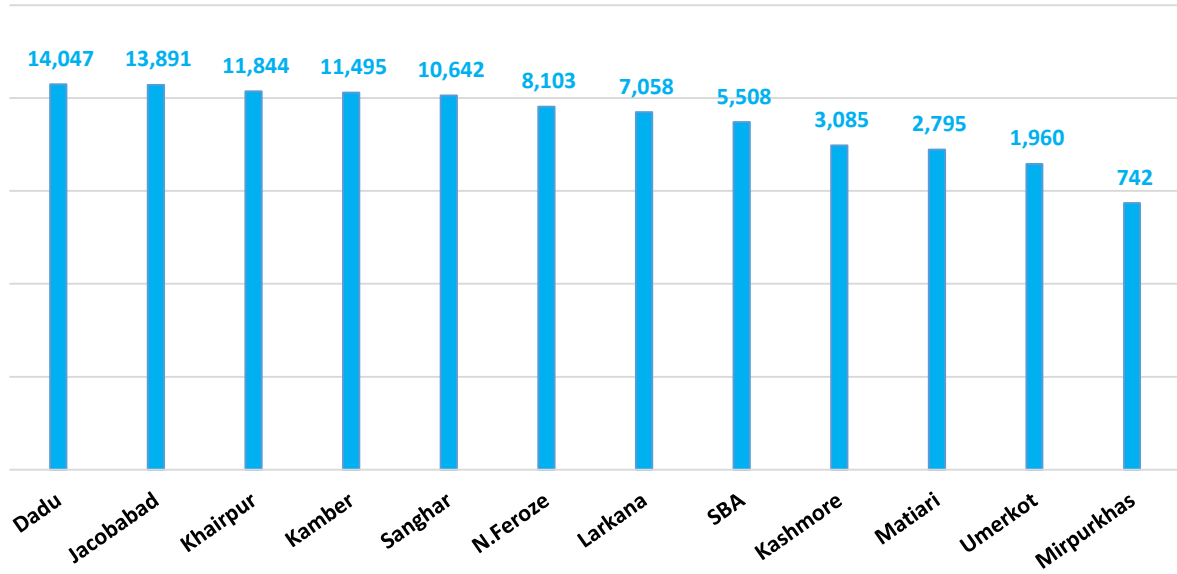
Others:

Organization	Relief
FGRF(INGO)	Cooked Food (Daigs) : 1058

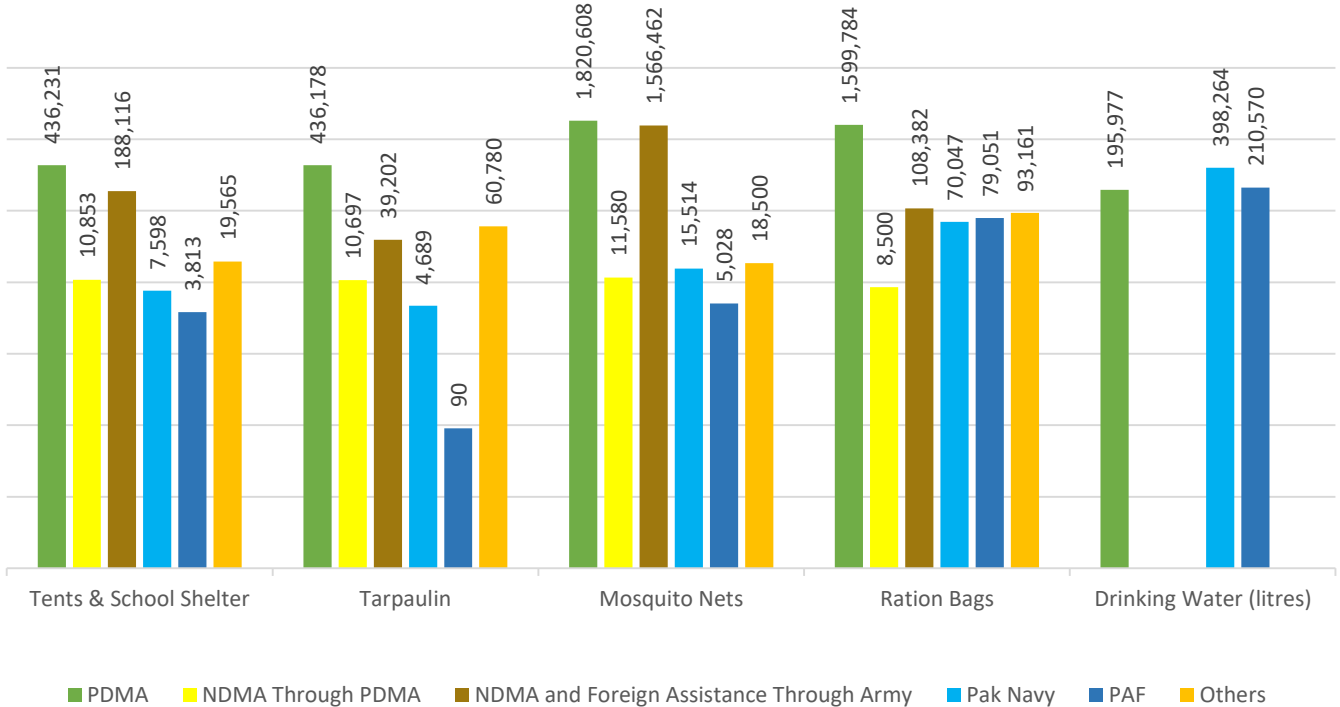
RELIEF PROVIDED BY UNHCR

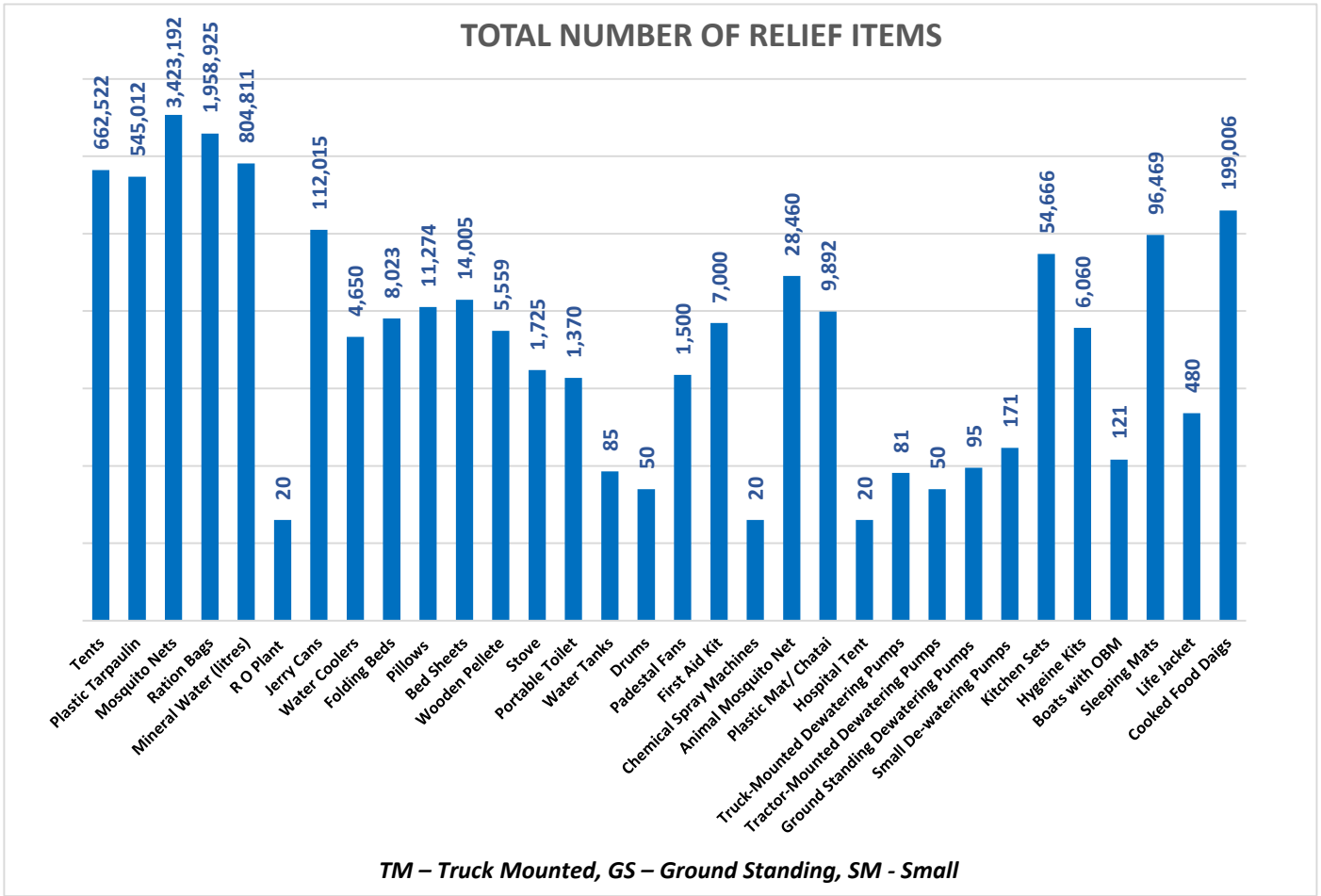


RATION BAGS PROVIDED BY UN-WFP



Combined Relief Provided





Last 24 Hours (Already Included in Total):

Districts	Ration Bags	Blankets	Nestle Bunyad Milk (Ctn.)
Dadu	3,518		
Matiari	2,244		
Kamber	2,211		
Kashmore	1,700		
Larkana	4,719		
Khairpur	2,827		
N.Feroze	2,503		
Sanghar	2,768		70
SBA	1,558		
Mirpurkhas	2,172		
Umerkot	1,960		
Badin		8,000	
TMK		3,500	
Jamshoro			70
Total	28,180	11,500	140

Sd/-
(KAZIM RAZA TALPUR)
**INCHARGE PEOC
PDMA SINDH**